

# GET THE WORLD'S LEADING PROXY APPLIANCE

## Blue Coat Full Proxy Edition ProxySG 300/600

Blue Coat Full Proxy Edition of the ProxySG appliance family, part of Blue Coat's Security and Policy Enforcement Center, provides complete Web security and WAN Optimization for your business. ProxySG delivers a scalable proxy platform architecture to secure Web communications and accelerate the delivery of business applications. ProxySG enables flexible, granular, policy controls over content, users, applications, web applications, and protocols. It's the product of choice for more than 86% of the Fortune Global 500.

### Complete Protection and Control

ProxySG provides comprehensive protection and control over Web traffic. It enables the following functions: Strong user authentication, Web filtering, deep inspection of content for data loss or threats, security checks to the WebPulse™ collaborative cloud defense, inspection and validation of SSL traffic, content caching and traffic optimization, bandwidth management, streaming media splitting and caching, method level controls per protocol. It also has the ability to filter, strip or replace Web content. Its new Web Application Policy Engine provides granular visibility and control over web applications. ProxySG is the ultimate foundation for a Secure Web Gateway with its content controls and policy flexibility. It can also provide the unique ability to deliver web security and acceleration in one solution to a branch office. This all enables branch users to have access directly to the internet, with the same security coverage as those users in the main office.

### Layered Defenses Security Framework

ProxySG with WebPulse, the collaborative cloud defense uniting over 75M users for Web awareness and response to Web content and threats, creates a hybrid design providing the best of on-premise controls with the collective intelligence of cloud service. ProxySG deployed with Blue Coat WebFilter automatically includes the WebPulse cloud service and Blue Coat ProxyClient for remote user protection, filtering and acceleration. ProxySG with Blue Coat ProxyAV enables the highest performing inline threat analysis, including SSL, with a choice of leading anti-malware engines. And data loss prevention integration is securely enabled with S-ICAP or standard ICAP on ProxySG with certified DLP partners.

### Unmatched Performance and Reliability

ProxySG innovations in new hardware with multiple cores and the SGOS operating system with multi-threading provide six models of the 300 and 600 series for the right mix of price

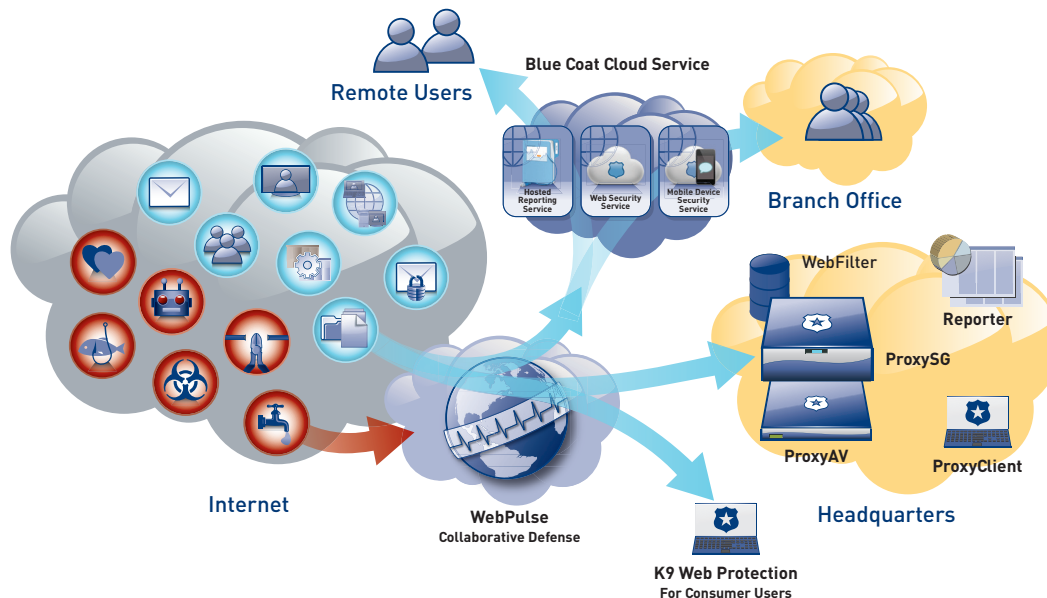
and performance. SGOS is a micro kernel built for Web object processing, secure and small in design, it rarely needs attention or patches, and it runs year after year at performance levels beyond the competition. Health checks and monitoring provide administrator awareness, plus Director enables centralized device, license and policy management of ProxySG Web gateways.

### Scalability and Lower TCO

The Blue Coat security framework scales in many ways resulting in lower TCO for customers. The performance innovations require less hardware, rack space and power than alternative solutions. New defenses can be seamlessly added to the WebPulse cloud to scale the depth of protection. Expanding groups of remote users can accelerate their office communications with ProxyClient and be protected by WebPulse. Available reporting scales for visibility of all Web gateway and remote users with custom dashboards and reports on a single server with an included optimized database for up to 20 billion log lines.

## Deploy ProxySG, WebFilter and ProxyAV together to enable:

- Web 2.0 threat protection
- Real-time web content ratings
- On-demand cloud intelligence
- Web 2.0 mashed up content filtering
- Inline threat analysis (five AV choices)
- Social networking threat protection
- True file type checks
- Compressed archive analysis
- File and attachment filtering
- Hardware-based SSL performance
- Data loss prevention integration
- Proxy avoidance blocking
- Web application & operation controls
- Protocol method controls
- Bandwidth management
- Media stream splitting and caching
- Acceleration and optimization
- Transparent or Explicit deployment
- Full IPv6 implementation
- IPv4 to IPv6 migration
- IPv6 advanced policy management



Blue Coat provides a layered defense against Web 2.0 threats leveraging WebPulse cloud intelligence from over 75M users to protect the Web gateway and remote users. ProxySG provides unmatched policy flexibility, performance and reliability to secure networks and accelerate content.

## FOR ALL PROXYSG 300 AND 600 SERIES

### REGULATIONS

Safety	IEC60950 (CB Scheme), UL60950 (USA), CSA C22.2 No.60950 (Canada), EN60950 (CE/Europe), CNS14336 (Taiwan), GB4943 (China), MEK60950 (Russia), NOM-019 (Mexico), AS/NZS 60950-1 (Australia/New Zealand)
Electromagnetic Compliance (EMC)	CISPR22/CISPR24 (International), EN55022/EN55024 (CE/Europe), FCC part 15 (USA), ICES-003 (Canada), VCCI V-3 (Japan), AS/ZNS-CISPR22 (Australia/New Zealand), CNS13438 (BSMI), 51318.22/51318.24 (Russia), GB9254/GB17625 (China), EM:KN22/IM:KN24 (Korea). Tested to Class A Emissions for all standards.
Environmental	RoHS-Directive 2011/65/EU, REACH-Regulation No 1907/2006
Product Warranty	Limited, non-transferable hardware warranty for a period of one (1) year from date of shipment. BlueTouch Support contracts available for 24/7 software support and options for hardware support.
Gov't Certifications	For further government certification information please contact <a href="mailto:Federal_Certifications@bluecoat.com">Federal_Certifications@bluecoat.com</a>
More Info	Contact <a href="mailto:regulatoryinfo@bluecoat.com">regulatoryinfo@bluecoat.com</a> for specific regulatory compliance certification questions and support

PROXYSG 300 SERIES	SG300-5	SG300-10	SG300-25	PHYSICAL PROPERTIES	
<b>LICENSE CAPACITY</b>				<b>DIMENSIONS AND WEIGHT</b>	
Employee Count	30	150	Unlimited	Enclosure	Desk, rack mountable (standard rack shelf required for rackmounting)
<b>SYSTEM</b>				Dimensions (L x W x H)	26.4cm x 21.1cm x 4.14cm (10.4in x 8.3in x 1.63in)* 27.1cm x 21.1cm x 4.14cm (10.7in x 8.3in x 1.63in)**
Disk Drives	1x250GB SATA	1x250GB SATA	1x250GB SATA	Weight (maximum)	2.6kgs(5.7lbs)
RAM	2GB RAM	2GB RAM	4GB RAM	<b>OPERATING ENVIRONMENT</b>	
Network Interfaces	(2) integrated 1000Base-T ports with bypass (SSL card) (1) integrated 1000Base-T port for management			Power	AC power 100-240V, 50-60Hz, 0.82A-0.32A
				Maximum Power	65 Watts
				Thermal Rating	221 BTU/Hr
				Temperature	5°C to 40°C (41°F to 104°F) at sea level
				Humidity	20 to 80% relative humidity, non-condensing
				Altitude	Up to 3048m (10,000ft)

PROXYSG 600 SERIES	SG600-10	SG600-20	SG600-35	PHYSICAL PROPERTIES	
<b>LICENSE CAPACITY</b>				<b>DIMENSIONS AND WEIGHT</b>	
Employee Count	500	1000	Unlimited	Enclosure	19" Rack-mountable
<b>SYSTEM</b>				Dimensions (L x W x H)	39.7cm x 42.7cm x 4.25cm (15.6in x 16.8in x 1.67in)* 40.6cm x 48.1cm x 4.25cm (16.0in x 18.9in x 1.67in)**
Disk Drives	1x250GB SATA	2x250GB SATA	2x250GB SATA	Weight (maximum)	5.5kgs (12.1 lbs) (600-10)*** 5.7kgs (12.6 lbs) (600-20/-35)***
RAM	4GB RAM	4GB RAM	4GB RAM	<b>OPERATING ENVIRONMENT</b>	
Onboard Ports	(2) integrated 1000 Base-T ports with bypass, (1) integrated 1000Base-T port for management, Onboard SSL			Power	AC power 100-240V, 50-60Hz, 2.16A-0.76A
Optional NICs	4x1000Base-F card (quad GigE Fiber SX) 4x1000Base-T card (quad GigE with bypass)			Maximum Power	150 Watts
				Thermal Rating	511.5 BTU/Hr
				Temperature	5°C to 40°C (41°F to 104°F) at sea level
				Humidity	20 to 80% relative humidity, non-condensing
				Altitude	Up to 3048m (10,000ft)

\* measurement of chassis only  
\*\* measurement includes extensions (handles and ears)  
\*\*\* weight w/o power cord